

MOTOPANFILO

[4 5 M]

Benetti

PRELIMINARY BROCHURE

The RENAISSANCE *of an* ICON

An ode to Benetti's heritage and authentic spirit, the CLASS family of displacement yachts adds a dash of contemporary attitude to the brand's timeless elegance and enduring appeal. The new Benetti Motopanfilo may be unashamedly modern in its design, but its roots are firmly anchored in times gone by, in an era brimming with creativity and vitality. It was the 1960s when Benetti launched the Motopanfilo, a yacht that rapidly became a much-coveted must-have among socialites, royalty and prominent personalities from the worlds of business and entertainment.



[EXTERIOR STYLING & CONCEPT]

RWD



EXTERIOR VIEW



EXTERIOR VIEW



EXTERIOR VIEW



EXTERIOR VIEW



MOTOPANFILO 45M

EXTERIOR VIEW



EXTERIOR VIEW





EXTERIOR VIEW



MOTOPANFILO 45M

EXTERIOR VIEW



MOTOPANFILO 45M



EXTERIOR VIEW



MOTOPANFILO 45M

The MAIN DECK REVOLUTION:
VERANDA DECK®



[INTERIOR DESIGN & EXTERIOR DECK DESIGN]

LAZZARINI PICKERING ARCHITETTI























The OWNER'S APARTMENT



















OWNER'S SUITE
ALTERNATIVE VERSION OPT



PROFILE

General Arrangement - Proposed Configuration

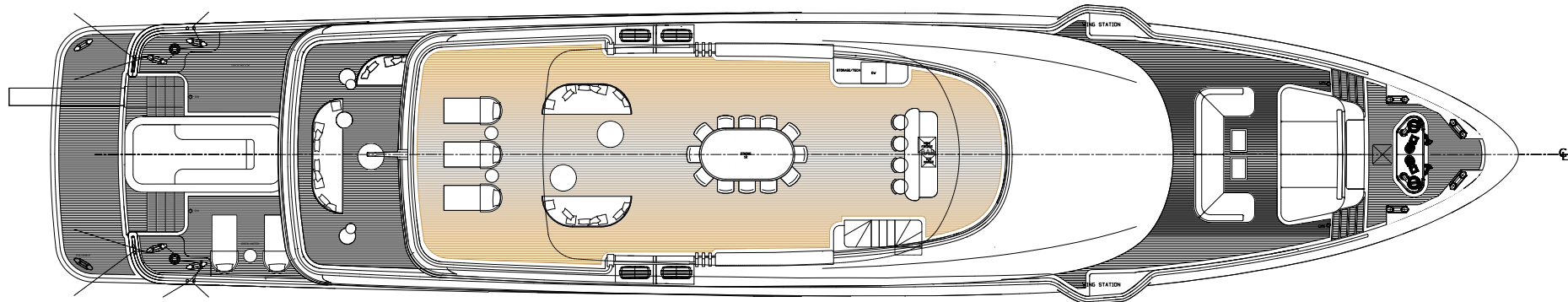


This brochure shall not constitute in any circumstance whatsoever any offer by the shipyard to any person and shall not be intended in any case to be incorporated into any contract. Any and all information contained in this brochure, including without limitation all technical data, performance characteristics, images, photos and drawings, are estimates or approximations given in good faith but not warranted. Therefore the sole indications binding for the builder are solely included in the contracts for sale of yacht and/or in the yacht construction contracts and in their relevant specifications. Notwithstanding all efforts to ensure accuracy, the information contained in the brochure may not cover all technical and commercial data nor accurately foresee or report all possible scenarios. Due to the different characteristics of each yacht, the shipyard declines any and all liability for any use thereof based on the information contained in this brochure.

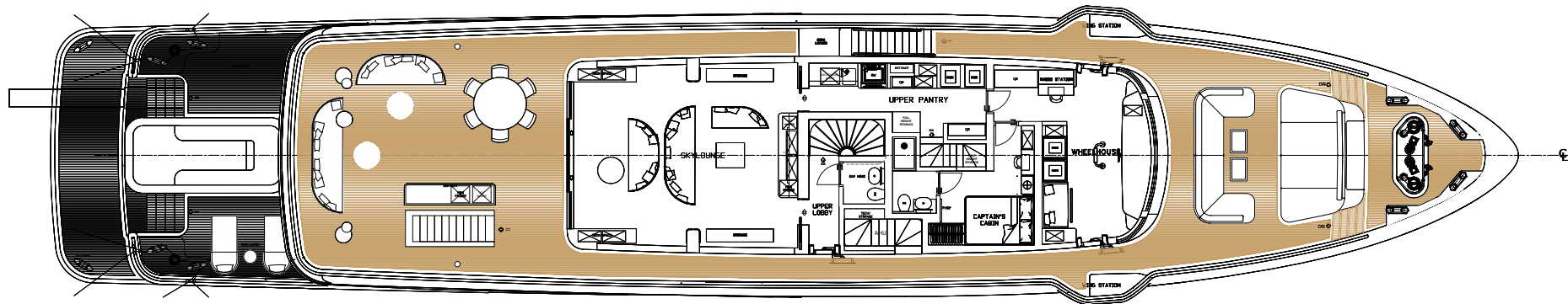


General Arrangement - Proposed Configuration

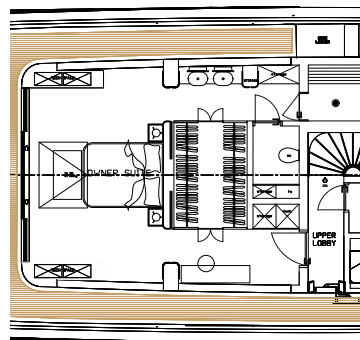
SUN DECK



UPPER DECK



OPTIONAL CONFIGURATION
UPPER DECK OWNER CABIN

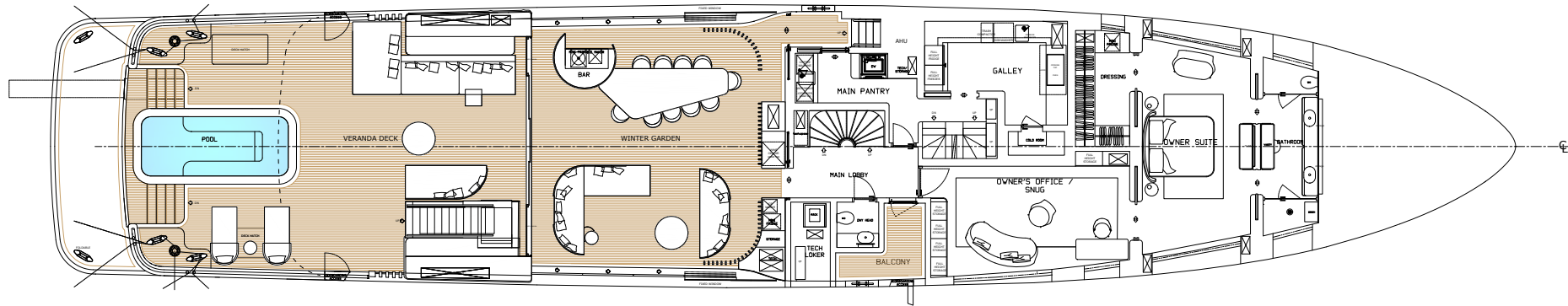


General Arrangement Plans may include options and upgrades that are not to be considered as standard supply.

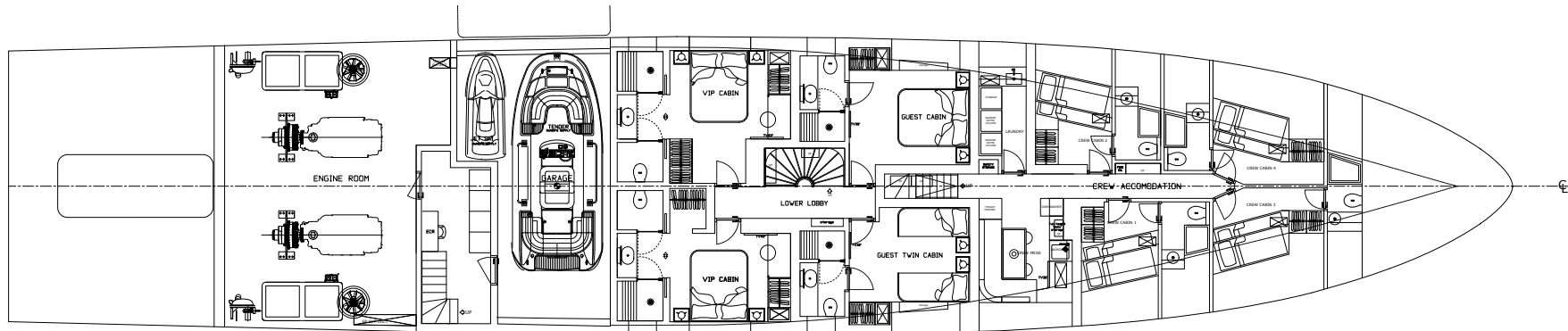


General Arrangement - Proposed Configuration

MAIN DECK

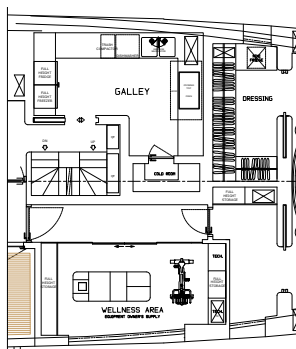


LOWER DECK

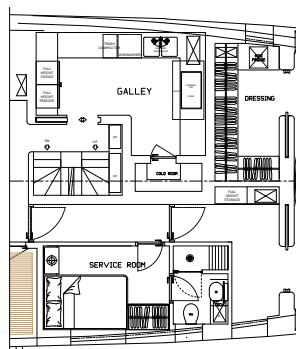


OPTIONAL CONFIGURATION

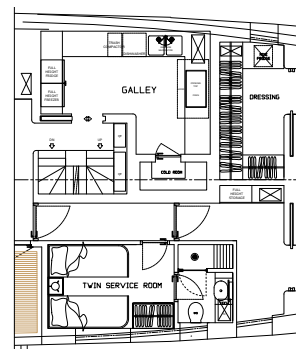
MAIN DECK WELLNESS AREA



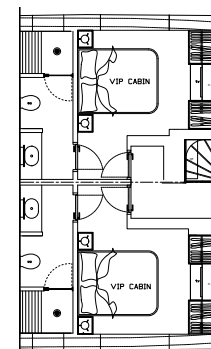
MAIN DECK SERVICE ROOM



MAIN DECK TWIN SERVICE ROOM



LOWER DECK LONGITUDINAL BEDROOMROOM



General Arrangement Plans may include options and upgrades that are not to be considered as standard supply.



Technical Features

CONSTRUCTION MATERIAL	STEEL / ALUMINIUM
LENGTH OVERALL (LOA)	44.55M / 146' 2''
MAXIMUM BEAM	9.10M / 29' 10''
MAXIMUM DRAFT	2.45M / 8' 0''M
GROSS TONNAGE	ESTIMATED 495 GT
FUEL CAPACITY	55,000L / 14,500 US GALS
FRESH WATER CAPACITY	8,000L / 2.1000US GALS
ENGINES	2 X MAN V12-1400, OF 1029 KW (1400 MHP) @ 2300 RPM EACH
MAX SPEED	15KNOTS
CLASSIFICATION	LLOYD'S REGISTER OF SHIPPING
RANGE	@10KNOTS 4,100NAUTICAL MILES
GENERATORS	2 X CAT C7.1 118 KW, 400 V, 3PH, 50 HZ
BOW THRUSTER	1 X ELECTRIC MOTOR DRIVEN, 90KW
STABILIZERS	FOR UNDERWAY AND ZERO SPEED (AT ANCHOR) CONDITIONS
NAVAL ARCHITECTURE	AZIMUT BENETTI S.P.A, R&D DEP. & P.L.A.N.A.
EXTERIOR STYLING & CONCEPT	RWD
INTERIOR DESIGN & EXTERIOR DECK DESIGN	LAZZARINI PICKERING ARCHITETTI
ACCOMMODATION FOR OWNER & GUESTS	10 PERSONS 5 CABINS
ACCOMMODATION FOR CREW	9 PERSONS 5 CABINS

The technical data shown here are intended to be preliminary and they are subject to future amendments based on the development of the project.

RELEASE 03.2024



MOTOPANFILO

[4 5 M]

This brochure shall not constitute in any circumstance whatsoever any offer by the shipyard to any person and shall not be intended in any case to be incorporated into any contract. Any and all information contained in this brochure, including without limitation all technical data, performance characteristics, images, photos and drawings, are estimates or approximations given in good faith but not warranted. Therefore the sole indications binding for the builder are solely included in the contracts for sale of yacht and/or in the yacht construction contracts and in their relevant specifications. Notwithstanding all efforts to ensure accuracy, the information contained in the brochure may not cover all technical and commercial data nor accurately foresee or report all possible scenarios. Due to the different characteristics of each yacht, the shipyard declines any and all liability for any use thereof based on the information contained in this brochure.

